
Description

Capacities: (E_{max})

1,2,3,5,7.5,10,20,30t

Rated output:

2.0mV/V

Digital:1,000,000d

Accuracy:

C3 OIML R60

Material of elastomer:

Alloy steel or stainless steel

Execution standard:

GB/T 7551-1997 Certificate

(eqv OIML R60)

Combined error: 0.015%

Sealed to IEC 529:

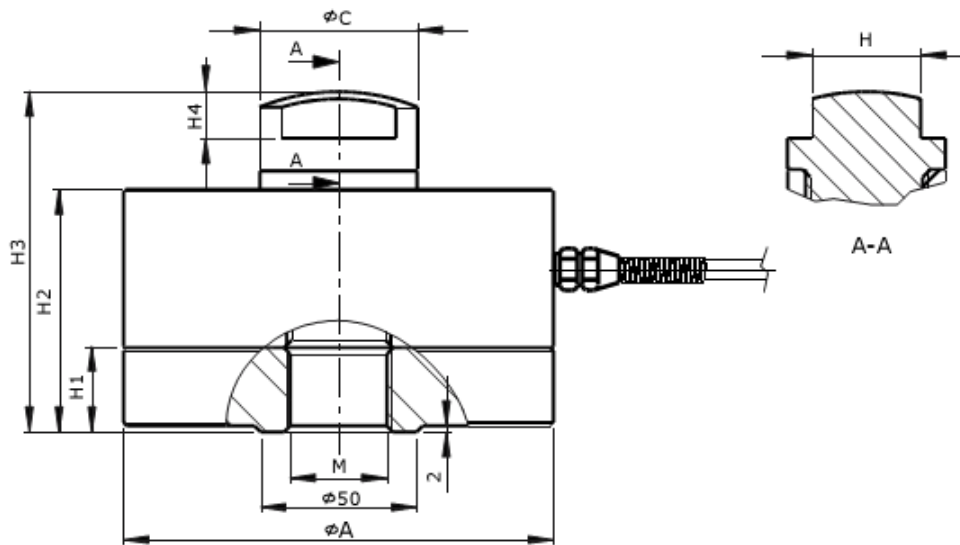
Protection grade: IP67 or IP68.

Protection against total immersion
in water for 30 minutes at a pressure
corresponding to a 1 m head of water.



Dimensions

(In mm. 1mm = 0.03937 inches)



CAP./SIZE	φA	φC	H	H1	H2	H3	H4	M
0.5,1,2,3t	105	25	20	25	70	85	10	14*2
5t	120	30	25	30	80	95	10	20*1.5
10,30t	155	45	35	35	90	115	15	32*2

Circuit Diagram

Electrical Termination

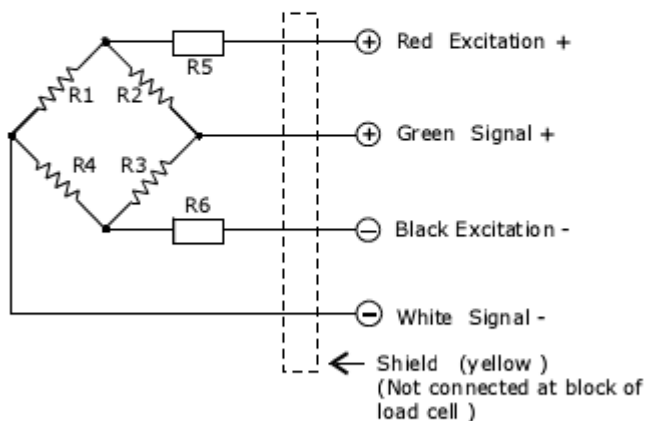
4 Core cable standard lengths:

1~3t: 3m, 5t: 6m, 10~30t: 12m

Diameter: φ6

Connection:

Refer to the following drawing:



Notice:

Do not change the length of cable, or lose, it will effect the sensitivity of load cell.

Specification

Item \ Parameter	C3	Unit
Rated load (E _{max}):	1~30	t
Maximal numbers of load cell verification Intervals (N _{lc}):	3000	d
Minimum load cell verification intervals Intervals (V _{min}):	0.01	% of rated load
Rated output (C _n):	2.0 ± 0.1%	mV/V
*Combined error:	0.015	±% of rated output
Temperature effect on sensitivity(T _k c):	0.0012	±% of rated output/°C
Temperature effect on zero balance(T _k 0):	0.0008	±% of rated output/°C
Zero balance:	1.0	±% of rated output
Input resistance(R _{ic}):	775 ± 5	Ω (Ohms)
Output resistance(R _o):	702 ± 2	Ω (Ohms)
Insulation resistance:	≥5000	MΩ (Mega-Ohms)
Safe overload:	150	% of rated capability
Ultimate overload:	300	% of rated capability
Operating temperature range:	-20~+70/-20~+160	°C /°F
Recommend excitation:	8~15	V(DC or AC)
Maximum excitation:	24	V(DC or AC)
Material of elastomer:	Alloy steel / Stainless steel	
Protection class:	IP67/IP68	

The data for deviation of synthesis error,TK0,TKc are typical values. The sum of these data meets the requirements according to OIML R60